





First American  
Title Insurance Company

File No.: 5425144

Location: Santa Barbara County, CA

### Legend

PARCEL ONE

PARCEL TWO

11/12/1921 Bk138 Pg107  
(Public Road - Not Plottable)

01/18/1952 #919 Bk1044 Pg346  
(Public Utilities - Not Plottable)

10/29/1953 #17412 Bk1189 Pg248  
(Water Pipe Line)

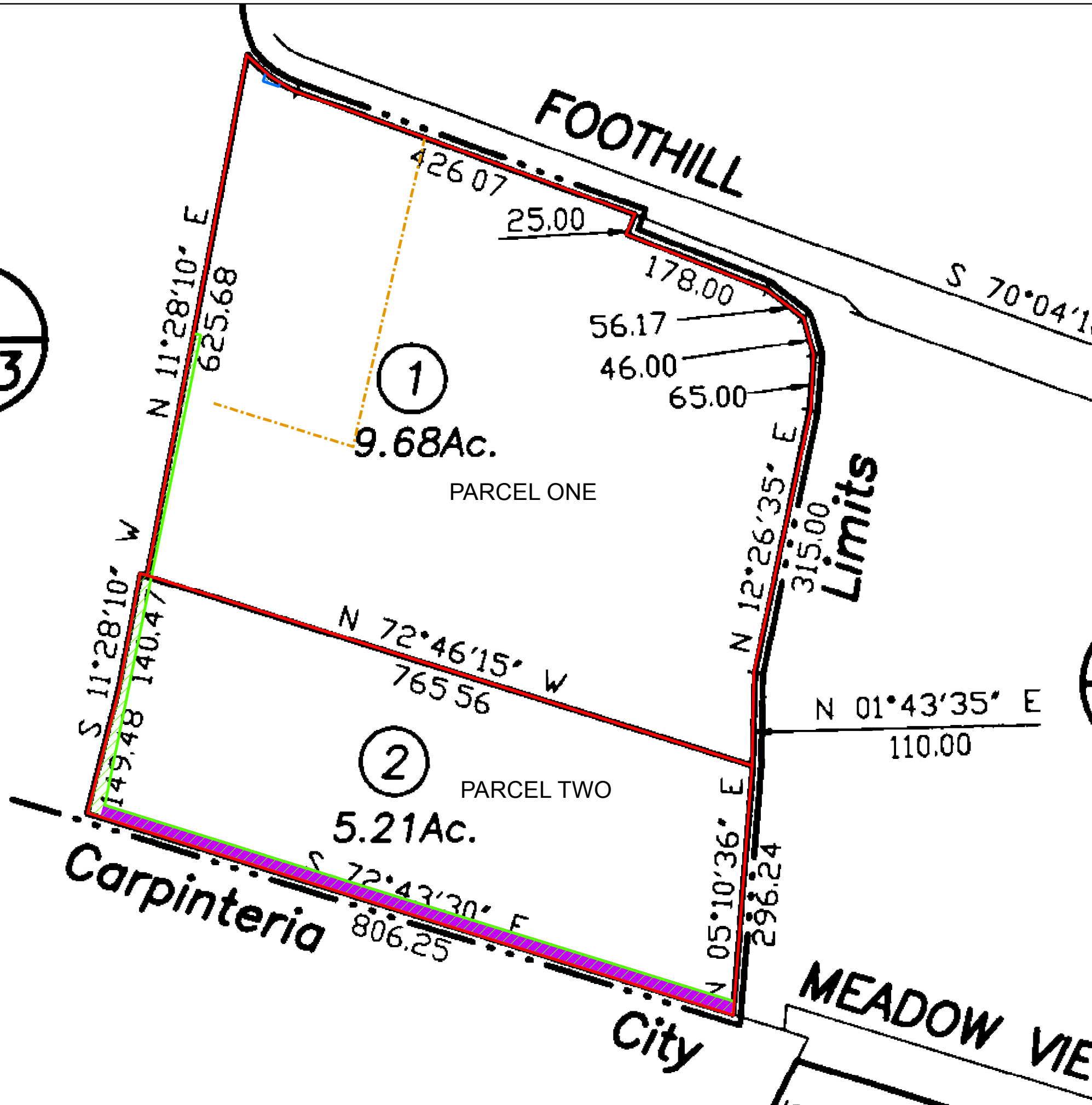
04/03/1963 #14411 Bk1985 Pg248  
(20' Wide - Sanitary Sewer)

04/03/1963 #14412 Bk1985 Pg251  
(Sewer - Not Plottable)

08/14/1967 #23105 Bk2201 Pg763  
(Public Utilities And Drainage)

10/04/1967 #28650 Bk2206 Pg1337  
(Public Utilities, Sewer And Drainage  
Facilities)

003



This map may or may not be an accurate description or identification of the land and is not intended nor may it be relied upon as a survey of the land depicted hereon. This map is solely intended to provide orientation as to the general location of the parcel or parcels depicted herein. First American Title Company, its subsidiaries and affiliates, expressly disclaim any and all liability for all loss or damage which may result from reliance or use of this map.

NOT TO SCALE



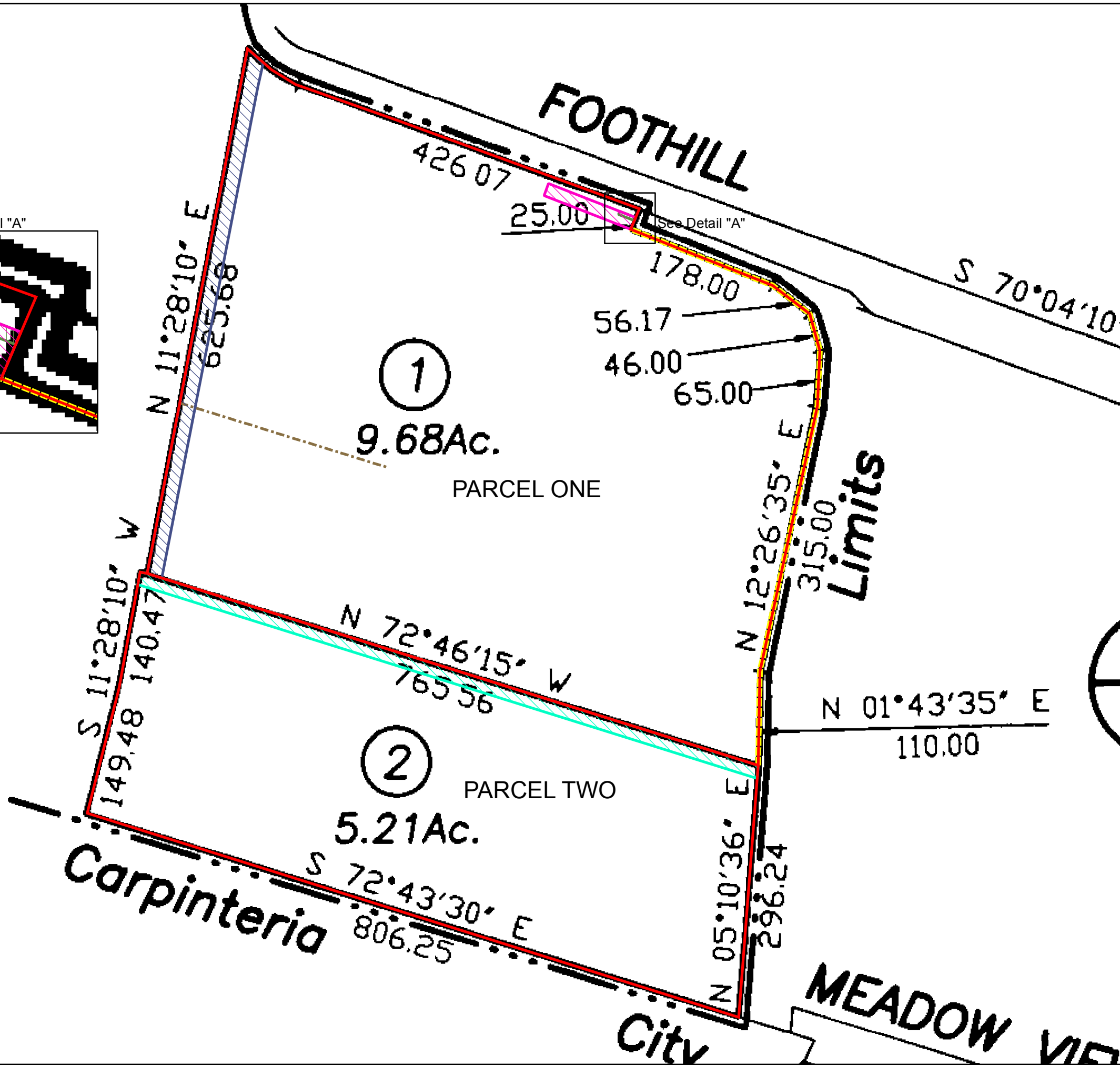
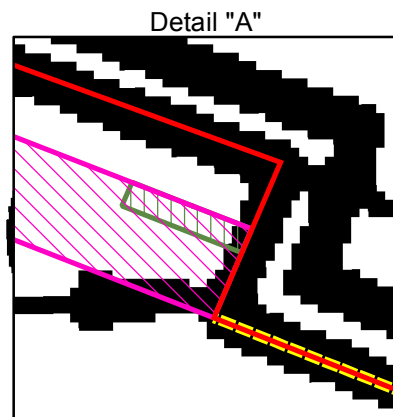
First American  
Title Insurance Company

File No.: 5425144

Location: Santa Barbara County, CA

### Legend

- PARCEL ONE
- PARCEL TWO
- 07/15/1970 #18717 Bk2314 Pg1284  
(Public Utilities)
- 01/15/1979 #79-27102  
(15' Wide-Construction)
- 05/01/1980 #80-17908  
(Construction)
- 11/15/1983 #83-61220  
(Public Utilities)
- 06/19/1987 #87-046021  
(6' Wide-Public Utilities)
- 10/25/1988 #88-068578  
(Public Utilities)



NOT TO SCALE

This map may or may not be an accurate description or identification of the land and is not intended nor may it be relied upon as a survey of the land depicted hereon. This map is solely intended to provide orientation as to the general location of the parcel or parcels depicted herein. First American Title Company, its subsidiaries and affiliates, expressly disclaim any and all liability for all loss or damage which may result from reliance or use of this map.